



# WHITE CENTER'S KING COUNTY PARKS

## DICK THURNAU MEMORIAL PARK

11050 10<sup>th</sup> Ave SW  
Seattle, WA 98146



128,  
131

This 33-acre park is a popular location for disc golf and features rolling hills. Formerly known as Lakewood Park, it was renamed to honor Dick Thurnau, long-time park neighbor who advocated for the health of the park and his community.

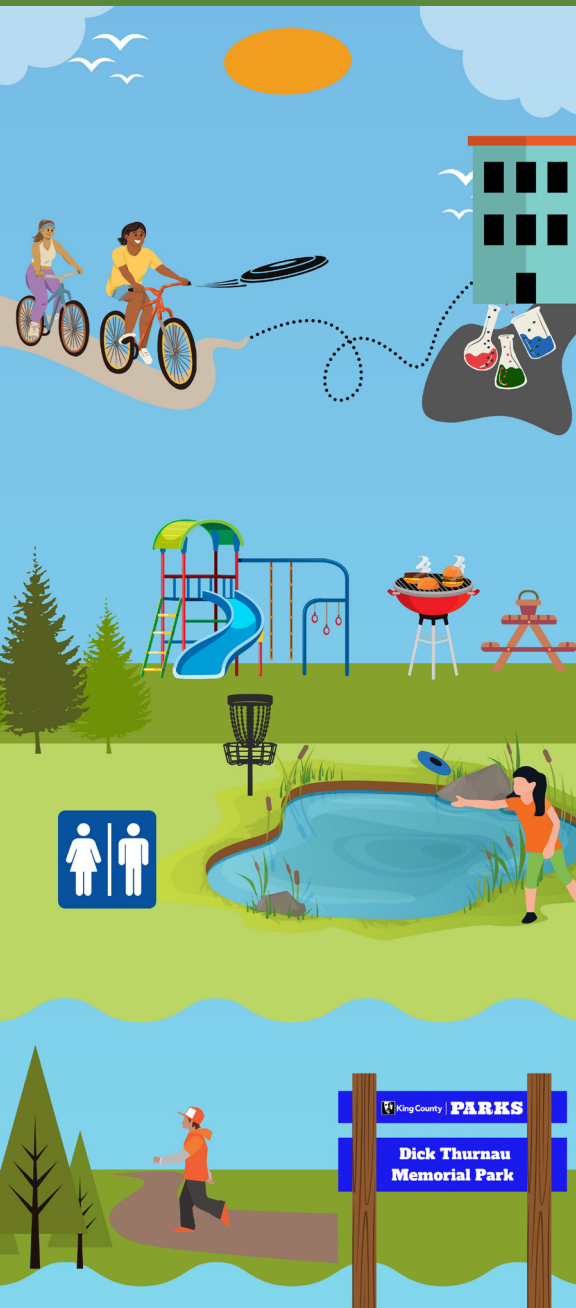
## NORTH SHOREWOOD PARK

SW 102<sup>nd</sup> St and 24<sup>th</sup> Ave SW  
Seattle, WA 98146



H,  
131

This quiet neighborhood park is tucked away and a great place to relax. Built into a steep hill with a gentle-sloping field at the bottom, mature trees throughout the park make for lovely places to picnic, soak up some shade, and listen to birds.



### DISC GOLF

Disc golf is played throughout the park. Watch for flying discs! Try out disc golf and stop by the shop at the park to rent or buy equipment (open M-F 12-7 p.m., Sat-Sun 10 a.m.- 6 p.m.)

### BIKE PLAYGROUND

A former tennis court is now the first bike playground in the U.S. and is a fun place for kids to safely learn how to ride bikes.

### TAF

The TAF Bethaday Community Learning Space is an eco-friendly building that provides educational opportunities in science, technology, engineering, and math along with hosting private events.

### HICKLIN LAKE

Hicklin Lake is an artificial lake. It's water is home to friendly neighborhood ducks. Due to water quality, please don't swim, fish, or let your dog in the water.



### BASKETBALL

Enjoy half-court basketball surrounded by beautiful views.

### PLAYGROUND

Features spinners, rope climbers, and a slide for both younger and older children to enjoy.

### PICNIC

This park is the ultimate picnic park! Put a blanket out anywhere in the field, under the trees, or at picnic tables scattered across the park. A couple are next to the playground so you can watch the kids and take a break for lunch.

### NATURE TRAILS

Get a nice workout by walking up and down the nature trails. Along the way, look for birds and squirrels. Your hard work is rewarded with views of the hills and neighborhood below.

## STEVE COX MEMORIAL PARK

1321 SW 102<sup>nd</sup> St  
Seattle, WA 98146



H

Formerly White Center Park, this park was renamed Steve Cox Memorial Park in 2007 in honor of a fallen King County Sheriff's Deputy who was also a beloved community leader.

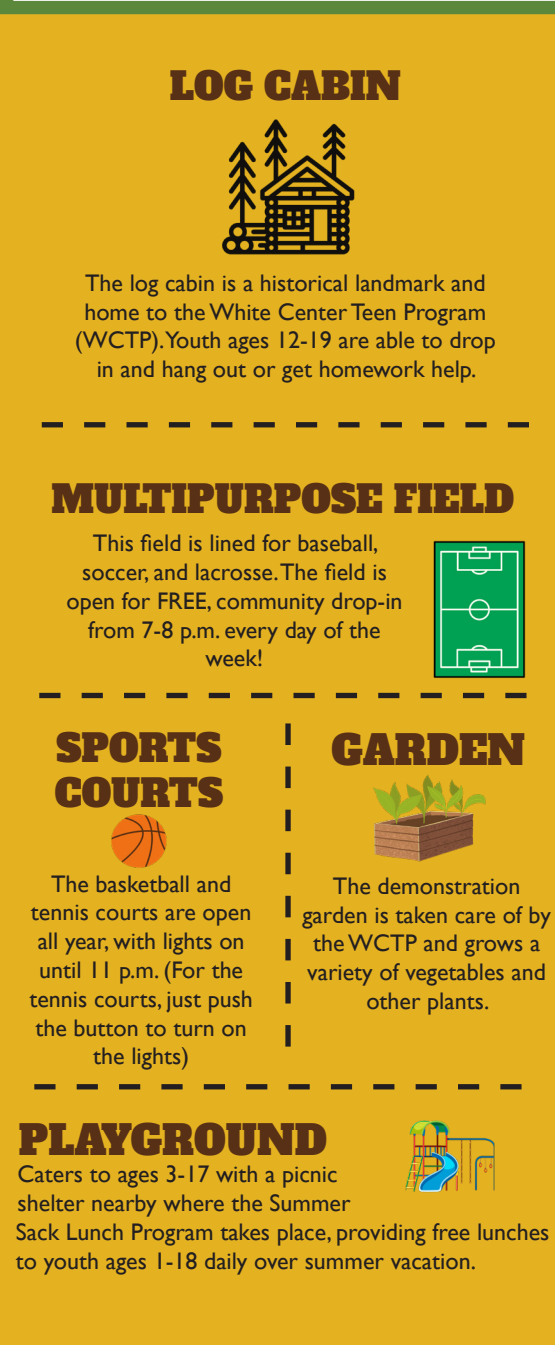
## WHITE CENTER HEIGHTS PARK

SW 102<sup>nd</sup> St and 7<sup>th</sup> Ave SW  
Seattle, WA 98146



128,  
131

In 2007, King County Parks carried out a community-led park renovation with the support of Starbucks, adding many amenities to this six-acre park.



### LOG CABIN

The log cabin is a historical landmark and home to the White Center Teen Program (WCTP). Youth ages 12-19 are able to drop in and hang out or get homework help.

### MULTIPURPOSE FIELD

This field is lined for baseball, soccer, and lacrosse. The field is open for FREE, community drop-in from 7-8 p.m. every day of the week!



### SPORTS COURTS

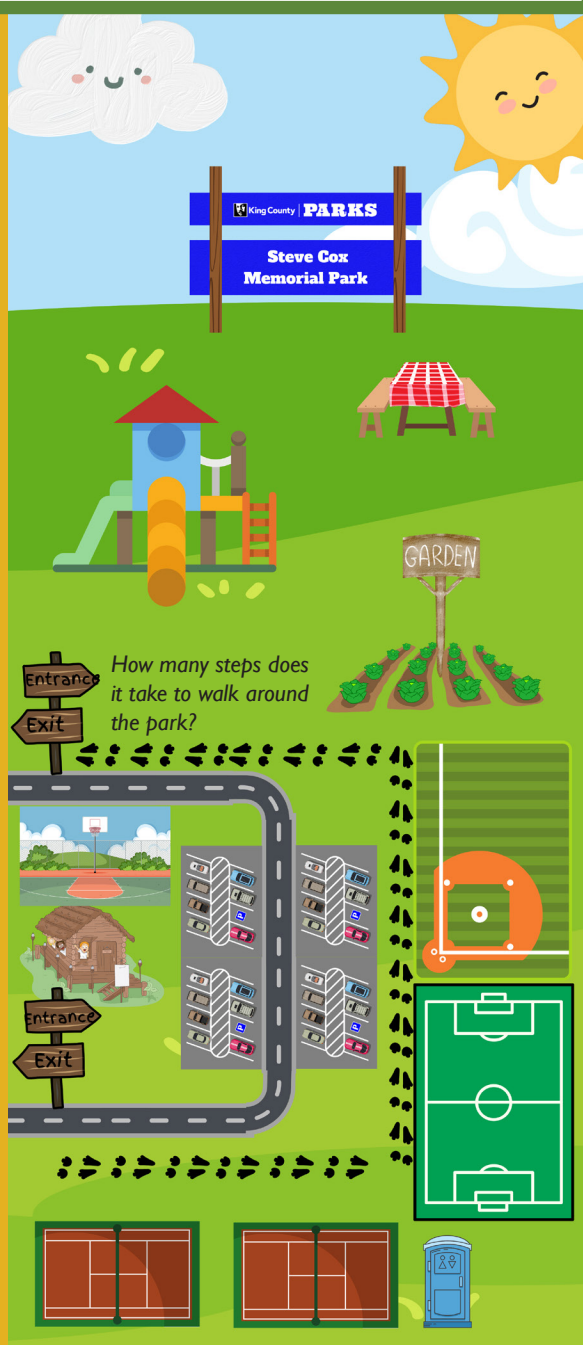
The basketball and tennis courts are open all year, with lights on until 11 p.m. (For the tennis courts, just push the button to turn on the lights)

### GARDEN

The demonstration garden is taken care of by the WCTP and grows a variety of vegetables and other plants.

### PLAYGROUND

Caters to ages 3-17 with a picnic shelter nearby where the Summer Sack Lunch Program takes place, providing free lunches to youth ages 1-18 daily over summer vacation.



### COMMUNITY GARDEN

The raised garden beds are available to community members through the White Center Food Bank. To reserve a plot, contact [admin@whitecenterfoodbank.org](mailto:admin@whitecenterfoodbank.org) or (206) 762-2848.

### WILDLIFE

Bird houses and bat boxes around the park support a variety of local wildlife. Bring binoculars to spot even more animals!

### BRIDGE

White Center Heights Park has a wetland area that can be accessed by a bridge over the pond, offering a glimpse of nature in an urban setting.

### DESIGN

Updates to the park were designed by students from University of Washington's Landscape Architecture Program.

